

## Suggested Sequence for Computer Science Majors with Cybersecurity Specialization

All courses are 1 Unit (4 credit hours) unless otherwise noted. A full-time student typically takes 4 units, or up to a maximum of 4.5 units, in a semester.

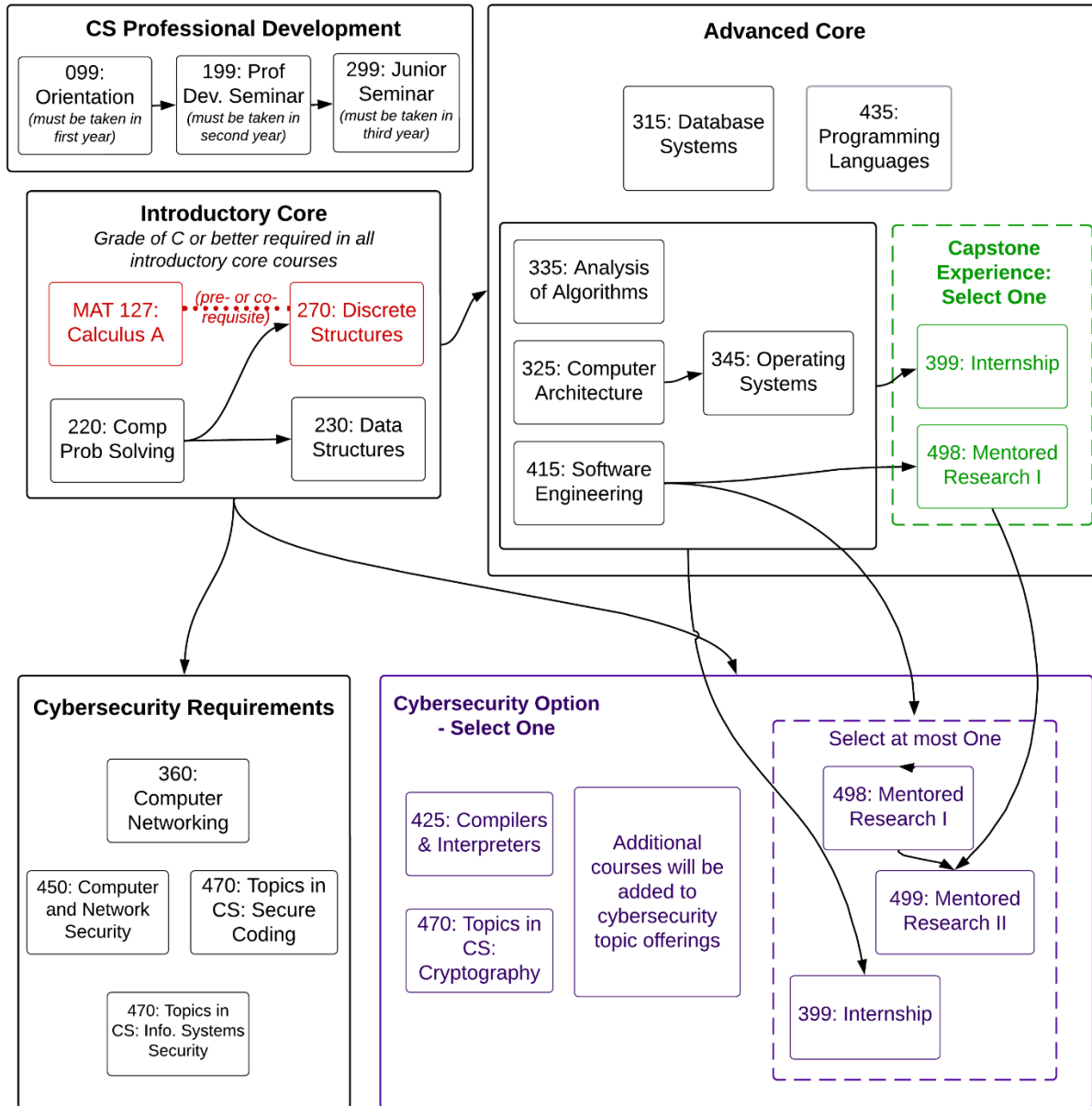
- **Green** indicates **Computer Science** courses;
- **Blue** indicates **Math or Science correlate courses**;
- **Orange** indicates **College Core / Liberal learning** courses, including the **world language** requirement.
- **Black** indicates free elective courses.

<b>Year 1 (8 units)</b>	
CSC 099: Orientation to CS (0 unit; Fall) CSC 220: Computational Problem Solving (Fall) MAT 127: Calculus A First Year Seminar	CSC 230: Data Structures (Spring) CSC 270: Discrete Structures (Spring) STA 215: Statistical Inference World Language 1 and 2
<b>Year 2 (8.25 units)</b>	
CSC 199: Prof. Dev. Seminar (0.25 unit; Fall) CSC 470: Special Topics: Information Systems Security CSC 315: Database Systems (Spring) CSC 325: Computer Architecture	CSC 335: Analysis of Algorithms CSC 360: Computer Networking (Fall) MAT 205: Linear Algebra World Language 3 (if needed) <u>or</u> College Core / Liberal Learning College Core / Liberal Learning (1 unit)
<b>Year 3 (8.25 units)</b>	
CSC 299: Junior Seminar (0.25 unit; Spring) CSC 470: Special Topics: Secure Coding CSC 345: Operating Systems CSC 415: Software Engineering	CSC 450: Computer and Network Security Science (2 units) College Core (2 units)
<b>Year 4 (8 units)</b>	
CSC 399: Internship <u>or</u> CSC 498: Mentored Research CSC 435: Programming Languages (Fall) CS Option (from approved list of CS Options for Cybersecurity) College Core (2-3 units as needed) Free Elective (3 units) – recommended to take courses from lists of CS Options or additional courses approved for Cybersecurity	

# Suggested Sequence for Computer Science Majors with Cybersecurity Specialization

The flowchart below shows the Computer Science core and optional courses. The arrows indicate the prerequisite structure.

## Computer Science Major with Cybersecurity Specialization Course Prerequisite Structure



(All course prefixes are CSC, unless otherwise specified)

Legend:

Black: Required Core

Blue: Required Selection

Green: Required Capstone

Purple: Major Elective

Red: Required Math

Effective Fall 2024